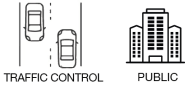




CITY GATE



CG  
SERIES

# CITY GATE

Mobile barrier for traffic management

## Design and safety for urban traffic

**City Gate** is a one-of-a-kind sliding mobile barrier designed to regulate access to **pedestrian areas, traffic-restricted zones, and city centers** in a low-impact and elegant way.

Unlike traditional barriers, City Gate also functions as a **planter**, it can be filled with flowers or plants **to blend perfectly into the urban environment**.

- Quick installation, **no excavation** or construction work required
- **Equipped with photocells**, acoustic signals, and flashing lights for maximum safety
- Available in **various models** to meet different access control needs
- **Possibility to plant flowers or plants** to enhance the area's aesthetics.



Two-sides



One-side  
(right opening)

One-side  
(left opening)



## Standard configuration

The standard configuration of our systems is designed to ensure efficiency, safety and ease of management. The configuration includes:

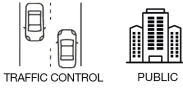
- **Barrier**, a device for controlling vehicle access with integrated **control unit**.

**PILOMAT**  
**HÖRMANN**

Pilomat S.r.l.  
Via Zanica 17/P, Grassobbio (BG) Italia  
pilomat@pilomat.com [www.pilomat.com](http://www.pilomat.com)



CITY GATE

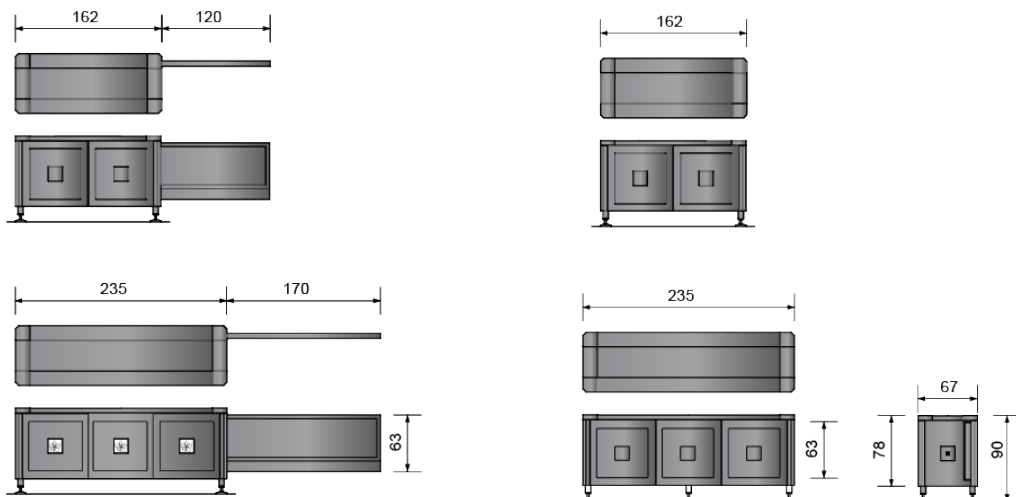


**CG**  
SERIES

# CITY GATE

Mobile barrier for traffic management

	CITY GATE SMALL	CITY GATE BIG
Barrier material	S235JR normal steel	
Fixed structure dimension	1620x670xh900mm	2350x670xh900mm
Sliding barrier dimension	1200xh900mm	1700xh900mm
Opening/closing speed	18s	25s
City Gate surface finish	Grey anthracite standard painting	
Reflecting adhesive strip	Standard - height 55mm	
Movement principle	Electromechanical with built in actuator	
Weight	385kg	495kg
Integrated lighting strips	Standard	
Safety laser photocell	Standard	
Reverse amperometric device	Standard	
Manual release for emergency opening	Standard	
Adjustable support for leveling the structure	Standard	
Control unit	Built-in the barrier	
Control unit voltage	230Vac (+/- 10%) 50/60H	
Max power absorbing	1000W (2 barriers 200W)	
Protection category	IP44	
Nominal operating temperature	-15°C +55°C	



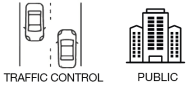
**PILOMAT**  
**HÖRMANN**

Pilomat S.r.l.  
Via Zanica 17/P, Grassobbio (BG) Italia  
pilomat@pilomat.com [www.pilomat.com](http://www.pilomat.com)



CG  
SERIES

CITY GATE



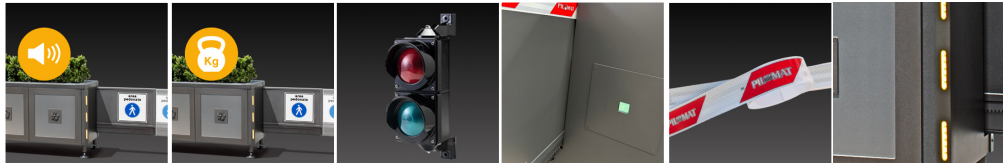
# CITY GATE

Mobile barrier for traffic management

Pilomat offers **safety accessories** for every installed system: including photocells, flashing lights and acoustic sensors for emergency vehicles. Each device is designed to **ensure maximum efficiency, clear signaling and secure control.**

Pilomat provide a complete range of **control devices**, designed to make the use of installed systems practical and immediate. Buttons, selector and remote controls allow users to operate the devices with a single gesture, **ensuring immediate, reliable control and intuitive management.**

## Safety and visibility



Warning signal

Safety reverse function

Traffic light

Photocells

Reflective strip

LED

## Control devices



Key switch

Card reader

Numeric key pad

Finger scan

Hand transmitter

License plate reader



App or Bluetooth

Timer  
(week - year)

GSM activator

P-Connect

Cloud Unit W5-B



**PILOMAT**  
**HÖRMANN**

Pilomat S.r.l.  
Via Zanica 17/P, Grassobbio (BG) Italia  
pilomat@pilomat.com [www.pilomat.com](http://www.pilomat.com)